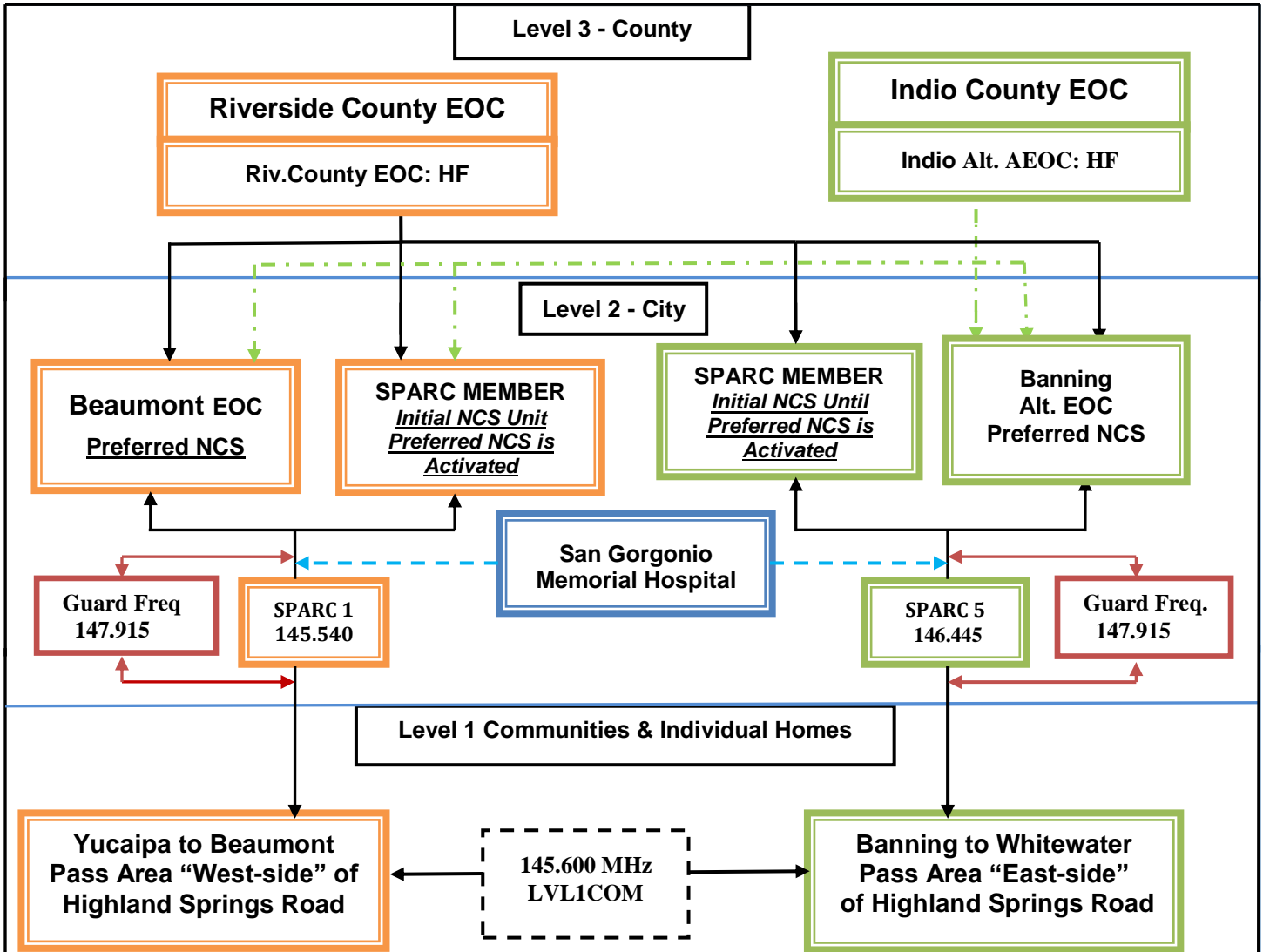


SPARC EMERGENCY FREQUENCIES PLAN

(Rev 6.3 by Joseph Veca KK6FYE/CERT 170209)



Frequency Name	Frequency MHZ	USAGE
LVL1COM	145.600	Communications within Level 1
GUARD FREQ.	Mt.Edna 147.915	This Repeater output Freq. for use as initial Command control, 147.915 down .600 khz -PL 123
SPARC 1	145.540	Communications between "WEST-side" communities to "WEST-side EOC /NCS
SPARC 2	145.800	Riverside County RACES usage during Emergency Operations
SPARC 3	223.480	<i>(Not used for emergency communications)</i>
SPARC 4	449.520	Alternate frequency for handling traffic & communication between "East & West NCS / EOC
SPARC 5	146.445	Communication between "East-side" communities to East-side EOC/NCS
SPARC 6	146.535	Undefined
HF	7.295	[LSB] Communications between Level 2 & Level 3 during the Day (0900 to 2100)
HF	3.945	[LSB] Communications between Level 2 & Level 3 during the Evening (2100 to 0900)

NOTES: